



Smaller footprint for tight spaces



## 7,932 Gallon Open-Top Mini Weir Tank

Capacity: 7,932 gal (188 bbl)  
Height: 8'6"  
Width: 8'6"  
Length: 24'  
Tare Weight: 12,300 lbs

*All sizes are approximate*

At Adler Tank Rentals, we are committed to providing safe and reliable containment solutions for all types of applications.

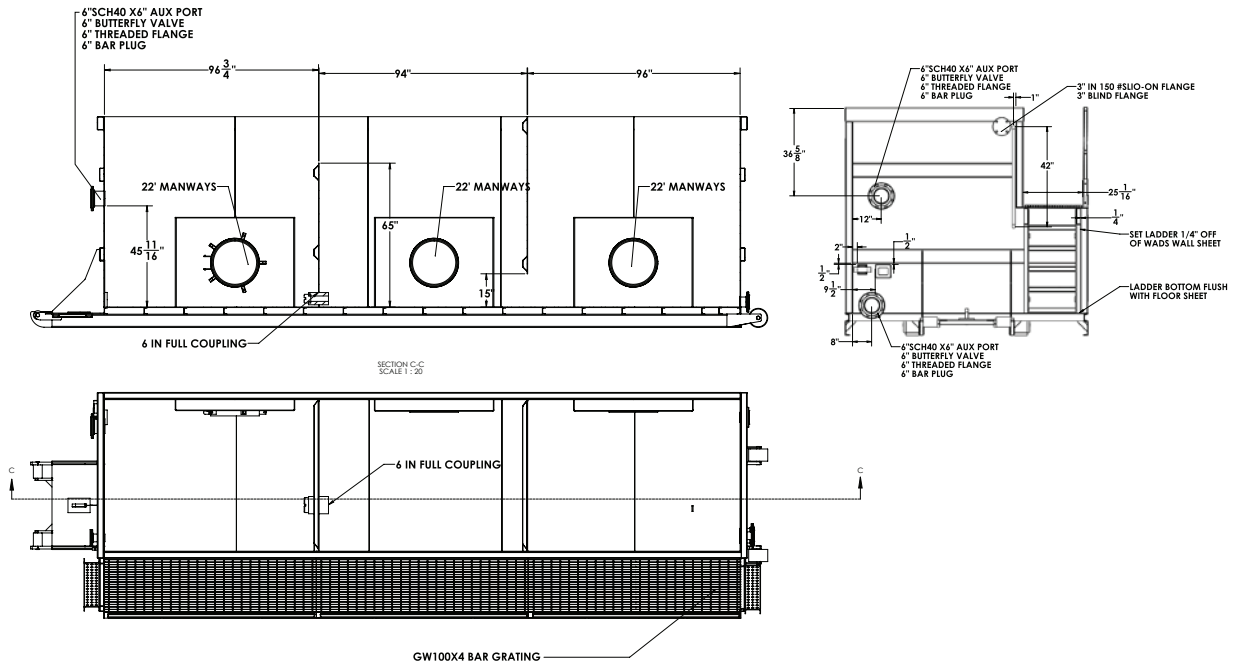
Designed with internal weirs to promote faster separation of oils and particulate contaminants from stored groundwater, the 7,932 Gallon Open-Top Weir Tank provides a smaller footprint to make transport and placement simple where jobsite space is premium.



### Mechanical Features

- Epoxy lined interior
- 3" blind flange fill port
- Three (3) standard 22" side-hinged manways
- Multiple 6" valved fill/drain ports, including floor-level valves for low point drain out
- Sloped and V bottom for quicker drain out and easier cleaning
- Easy-to-clean design with smooth-wall interior, no corrugations and no internal rods
- Meets Cal/OSHA guidelines
- Two (2) front and three (3) rear 6" valved fill/drain port
- One (1) 3" front blind flange and one (1) 3" rear blind flange

# 7,932 Gallon Open-Top Weir Tank Frac Tank



## Safety Features

- Non-slip step materials on stairs and catwalks
- "Safety yellow" rails and catwalks for high visibility
- Safe operation reminder decals
- Safety side stairway—no mechanical guard rails to set up
- Strapping charts

## Options

- (2) 3" blind flange fill ports with option to add 3" fill lines to front and rear
- SS 316 stainless steel
- Level gauges (fixed or temporary)
- External or internal manifold
- White exterior for MSS compliance
- Audible alarms, strobes and level gauges (digital and mechanical)

## Comprehensive Service

Adler Tank Rentals provides containment solutions for hazardous and non-hazardous liquids and solids. We offer 24-hour emergency service, expert planning assistance, transportation, repair and cleaning services. All of our rental equipment is serviced by experienced Adler technicians and tested to exceed even the most stringent industry standards.

