



Easy-to-clean, smooth-wall interior



## 7,048 Gallon

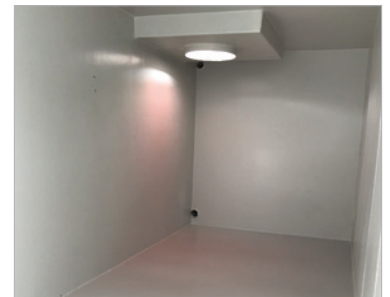
### Mini Double-Wall Tank

(Available in select locations)

Capacity: 7,048 gal (167 bbl)  
Height: 8' 8"; 7' 2" (wall)  
Width: 8' 6" (outside); 7' 2½" (inside)  
Length: 23"; 20' 0" (tank body)  
Tare Weight: 17,300 lbs

At Adler Tank Rentals, we are committed to providing safe and reliable containment solutions and accessories for all types of applications where performance matters. Combined with our standard smooth-wall construction and easy access to the tank interior for ease of cleaning, the 7,048 Gallon Double-Wall Mini Tank is a top-performing liquid storage solution.

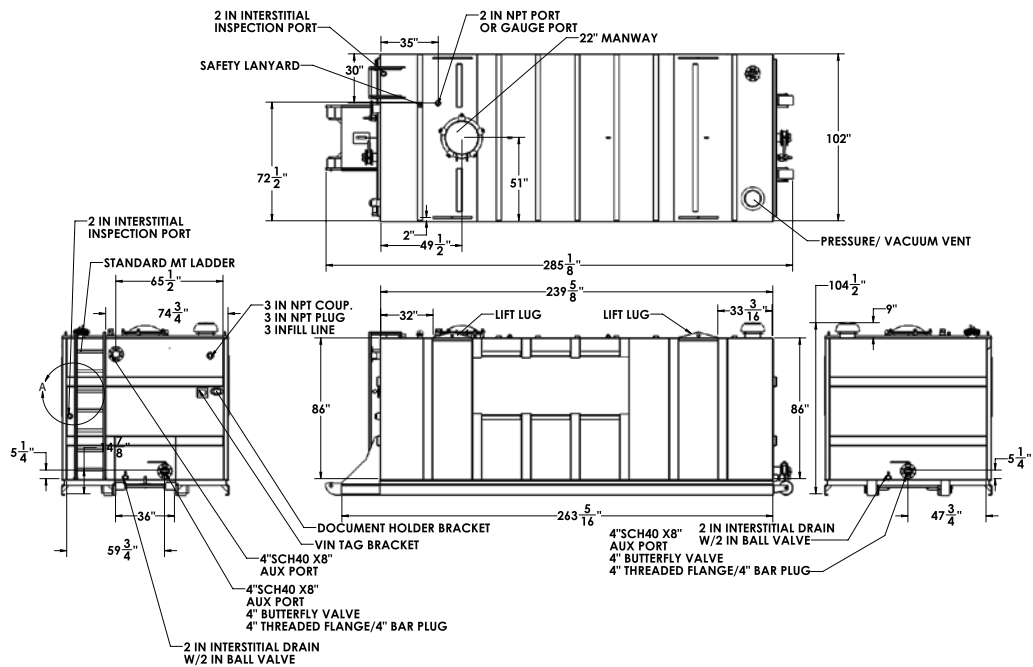
It boasts a wide array of safety features such as integrated safety stairways, eliminating the need for workers to get on top of the tank. Stairways are painted safety yellow for high visibility, and Grip Strut steps prevent slipping. Attached strapping charts and safe operation reminder decals provide additional protective measures.



#### Mechanical Features

- Manway: 22" diameter, low profile, top Buna-N gasket 1
- Dual manway housing: Patented 36" diameter manway exterior x 22" diameter interior with Buna-N gasket
- Relief valve: 16 oz./in2 pressure setting, 0.4 oz./in2 vacuum setting, Buna-N seal
- Valves: 4" wafer butterfly valve. Cast iron body, Buna-N seat & seals, 316 SS stem, nylon coated ductile iron disk w/plug & chain.
- Front drain: 4" - 150# flanged with butterfly valve
- Front aux port: 4" - 150# flanged with butterfly valve
- Rear drain: 4" - 150# flanged with butterfly valve
- Interstitial drain: 2" threaded with plug (front & rear)
- Interstitial test port: 2" threaded with sight glass front
- Front feed port: 4" - 150# flanged with plug
- Roof connections: Vapor recovery: 4" - 150# threaded flange & plug. Aux. port: 4" - 150# threaded flange & plug. Gauging port: 2" threaded with sight glass.
- Rear connections: Aux. port: 4" - 150# threaded flange & plug
- Front stairway: 24" bolt-on with landing (OSHA compliant)

# 7,048 Gallon Mini Double-Wall Tank



## Safety Features

- "Safety yellow" stairways for high visibility
- Safe operation reminder decals
- Strapping charts

## Options

- Steam coils
- HD lifting lugs
- Float gauge
- Feed lines
- Valves: 4" wafer butterfly valve. Cast iron body
- Buna-N seat & seals, 316 SS stem, nylon coated
- Ductile iron disk w/plug & chain
- Additional aux. ports/manways
- Custom interior coatings/exterior colors

## Comprehensive Service

Adler Tank Rentals provides containment solutions for hazardous and non-hazardous liquids and solids. We offer 24-hour emergency service, expert planning assistance, and transportation. All of our rental equipment is serviced by experienced Adler technicians and tested to exceed even the most stringent industry standards.

