

18,000 GALLON DOUBLE WALL TANK

In Select Markets



Capacity: 18,000 gallons

Height: 9' 8"

Width: 8' 6"

Length: 46'

All sizes are approximate

Mechanical features:

- 3" top fill tube
- (4) Standard 22" side hinged accessways
- Multiple 4" valved fill/drain ports including floor level valves for low point drain out
- 4" Vent
- Sloped bottom for 100% drain out and easier cleaning after use
- Smooth wall construction - no internal cross bracing
- Front mounted ladderwell for top access
- Fixed rear axle
- Nose rail cut - out for easy access when installing hose and fittings on the front /bottom of tank
- Double wall construction - 100% secondary containment, literally a tank built within a tank for storage of risk potential materials in environmentally sensitive areas

Safety features:

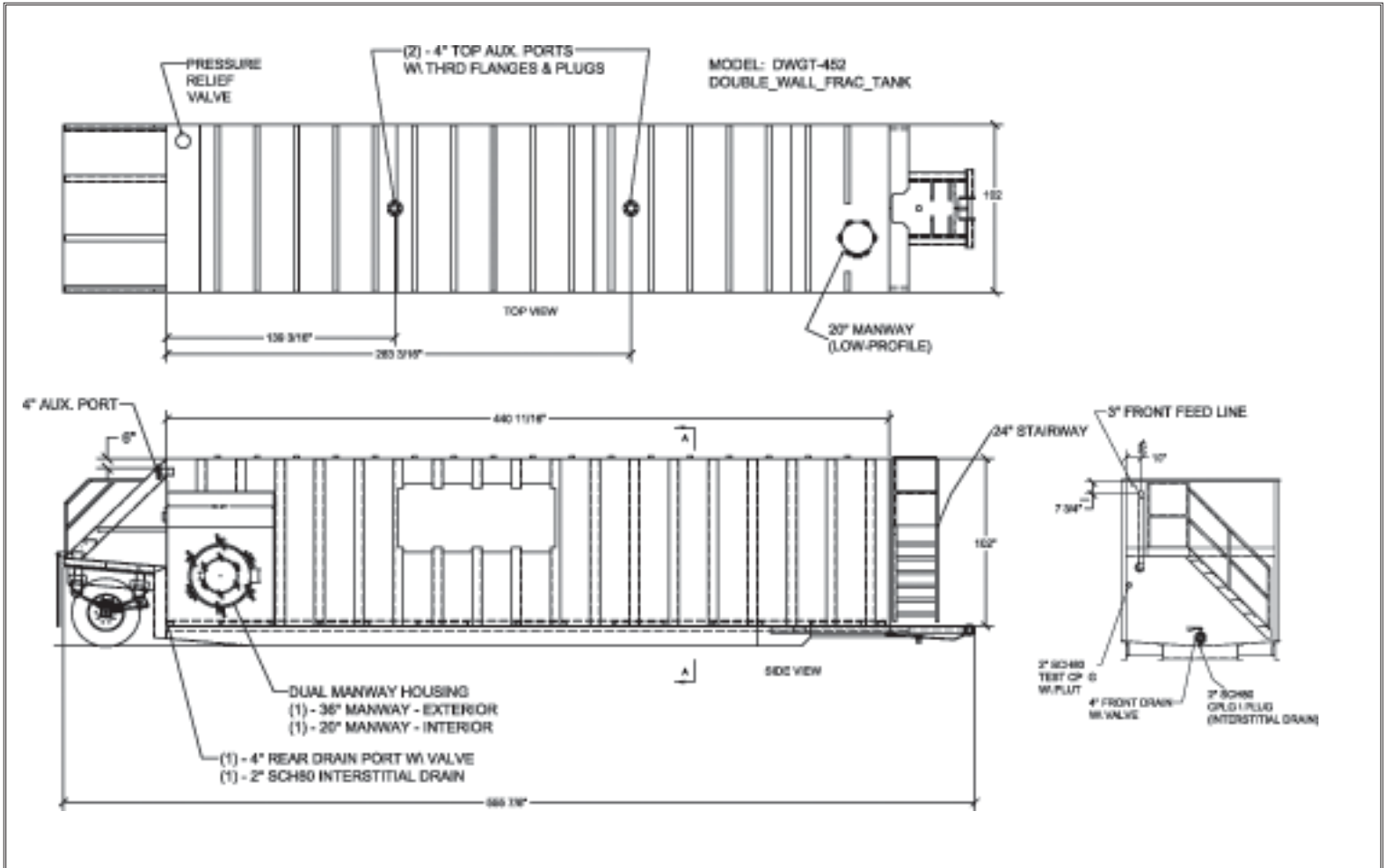
- All tanks are equipped with non-slip step material on ladderwells and catwalks
- All rails and catwalks are painted "safety yellow" for high visibility
- Safe operation reminder decals are applied on risk areas such as steps, valves and hatches
- Tanks are equipped with fill level charts and may be fitted with audible alarms, strobes and level gauges (digital and mechanical)



Strategic Storage Solutions 800-421-7471 www.adlertankrentals.com

STORAGE TANKS | MOBILE LIQUID STORAGE | EMERGENCY LIQUID STORAGE | HAZARDOUS WASTE ENVIRONMENTAL TANKS | FRAC TANKS | ISO TANKS | INDUSTRIAL WASTE TANKS | INDUSTRIAL TANKS SOLUTIONS STORAGE TANKS | WASTE STORAGE TANKS | HAZARDOUS SOLUTION STORAGE TANKS OSHA TANKS | NESHAP TANKS | EMERGENCY RESPONSE TANKS | STORAGE TANKS | MOBILE LIQUID

18,000 Gallon Double Wall Tank



Strategic Storage Solutions 800-421-7471 www.adlertankrentals.com

STORAGE TANKS | MOBILE LIQUID STORAGE | EMERGENCY LIQUID STORAGE | HAZARDOUS WASTE ENVIRONMENTAL TANKS | FRAC TANKS | ISO TANKS | INDUSTRIAL WASTE TANKS | INDUSTRIAL TANKS SOLUTIONS STORAGE TANKS | WASTE STORAGE TANKS | HAZARDOUS SOLUTION STORAGE TANKS OSHA TANKS | NESHAP TANKS | EMERGENCY RESPONSE TANKS | STORAGE TANKS | MOBILE LIQUID